



EX-800 (I II III IV) Full Automatic Folder Gluer



29

- ◆ The light-duty type mechanism design, with brand-new light-weight transmission structure, synchronized with the bottom-belt main transmission for drive of upper belt, ensures to convey the paper board smooth and stable at energy saving, lower noise and few downtime.
- ◆ The frequency converter for motor control, automatic adjusting speed and saving power.
- ◆ Double-screw bars for adjustment (motor adjustment as optional)
- ◆ Thicker multi-belts coordinated with motor vibration in feeder for continuous and accurate feeding paper.

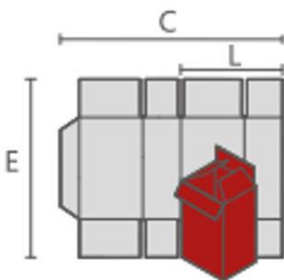


Specification:

Model	Max Speed	Power need(kw)	Weight(T)	Material Type
EX-800I	350	9	4	Cardboard 200-800gsm Corrugated paper N/E/F
EX-800II	350	9	4.5	
EX-800III	350	14	5.5	
EX-800IV	350	15.5	5.5	

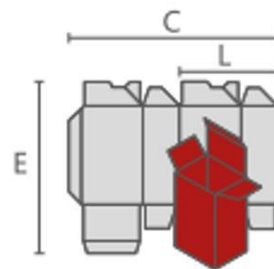
Machine speed depends on paper quality thickness.

Blanks Sizes:



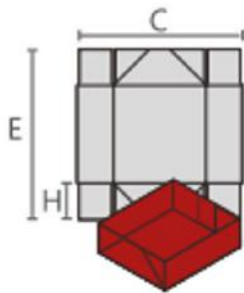
直线盒 / straight boxes

	MAX	MIN
C	800	120
E	800	60
L	395	70



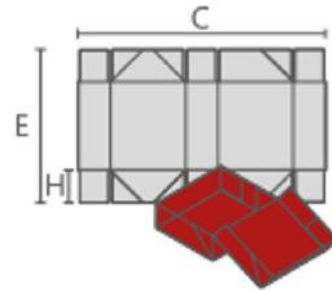
锁底盒 / Crash-lock bottom boxes

	MAX	MIN
C	800	140
E	700	60
L	395	70



四角盒 / 4-corner boxes

	MAX	MIN
C	800	280
E	700	160
L	150	30



六角盒 / 6-corner boxes

	MAX	MIN
C	800	280
E	700	200
L	150	30