



EX-900 1100 (I II III IV) High-Speed Fully Automatic Folder Gluer



- The machine is unit-type structure, which can work in with other function structures.
- The host is controlled by computer with wireless remote device and improved the operations flexibility.
- The machine adopts below outsourcing packed belts and you can change belts easily without tearing down shafts.
- Feeder, host and delivery systems are controlled by inverters and they can run together or one runs.



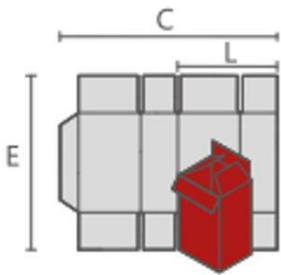
Specification:

Model	Max Speed	Power need(kw)	Weight(T)	Material Type
EX-900I	400	14	4.8	Cardboard 200-800gsm Corrugated paper N/E/F
EX-900II	400	20	5	
EX-900III	400	22.5	5.5	
EX-900IV	400	24	6	
EX-1100I	400	14	5	
EX-1100II	400	20	5.5	
EX-1100III	400	22.5	6	
EX-1100IV	400	24	6.5	

Machine speed depends on paper quality thickness.

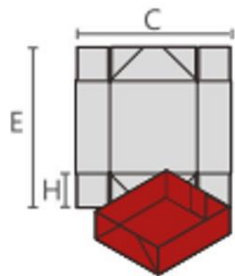


Blanks Sizes:



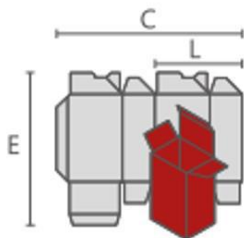
直线盒 / straight boxes

	1100		900	
	MAX	MIN	MAX	MIN
C	1100	150	900	150
E	1000	80	800	80
L	540	70	445	70



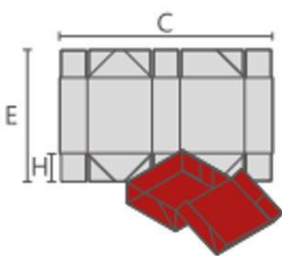
四角盒 / 4-corner boxes

	1100		900	
	MAX	MIN	MAX	MIN
C	1100	220	800	280
E	800	160	700	160
L	150	30	150	30



锁底盒 / Crash-lock bottom boxes

	1100		900	
	MAX	MIN	MAX	MIN
C	1000	280	900	280
E	1000	800	800	80
L	485	70	445	70



六角盒 / 6-corner boxes

	1100		900	
	MAX	MIN	MAX	MIN
C	1000	280	800	280
E	800	200	700	200
L	150	30	150	30