



EXM-1100 (III IV) Speedwave Structure 4 & 6 Corners Folder Gluer Machine



- ◆The Innovation and We have a unique core technology.
- ◆Two Sets Speed-Wave Device, Smart and easily adjust machine, can do more type irregular.
- ◆One Machine Dual Use. Only one-button control electric lift to quickly switch between the Speed-Wave function and the Standard function.
- ◆High Speed, High Precision and High Stability.
- ◆The Speed-Wave function can make doubled speed compare with Standard type, and more stable.

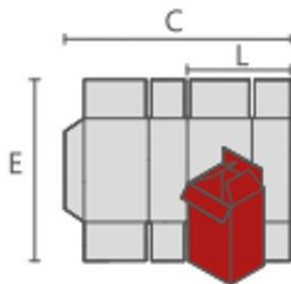


Specification:

Model	Max Speed	Power need(kw)	Weight(T)	Material Type
EXM-1100III	450	23.5	7.3	Cardboard 200-800gsm
EXM-1100IV	450	25	7.6	Corrugated paper N/E/F

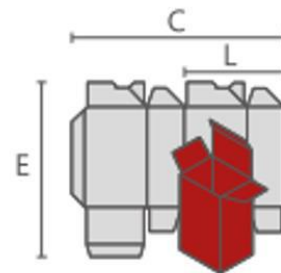
Machine speed depends on paper quality thickness.

Blanks Sizes:



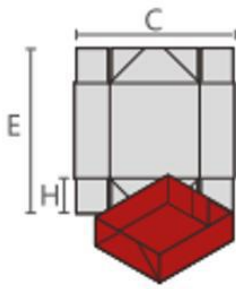
直线盒 / straight boxes

	MAX	MIN
C	1100	150
E	1000	80
L	545	70



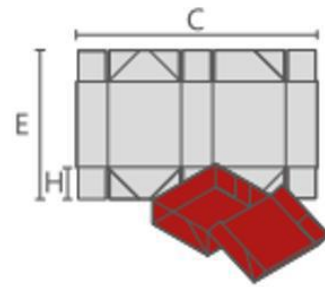
锁底盒 / Crash-lock bottom boxes

	MAX	MIN
C	1000	280
E	800	80
L	490	130



四角盒 / 4-corner boxes

	MAX	MIN
C	1000	220
E	800	160
L	150	30



六角盒 / 6-corner boxes

	MAX	MIN
C	1000	280
E	800	200
L	150	30