



EXN-1200 (I II III IV) Automatic And High Speed Corrugated Boxes Folder Gluer



- ◆ Super-heavy type mechanism design, with the modular type independent motor transmission structure, integrated with the motorized drive upper and bottom belt assembly, ensures to convey the paper board smooth and stable at energy saving, lower noise and few downtime, meets the requirements of energy conservation and high efficiency.
- ◆ Thicker multi-belts coordinated with motor vibration in feeder for continuous and accurate feeding paper.
- ◆ Flexible adding functional options for bottom-lock box, 4- or 6-corners collapsible box.
- ◆ Stronger power servo system for readjusting even while unaligned during folding procedure.

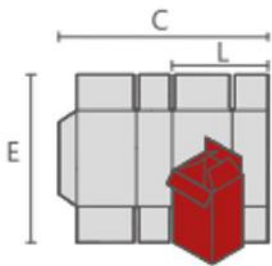


Specification:

Model	Max Speed	Power need(kw)	Weight(T)	Material Type
EXN-1200I	400	12	5	Cardboard 200-800gsm Corrugated paper N/E/F
EXN-1200II	400	15	5.5	
EXN-1200III	400	24	7	
EXN-1200IV	400	26.5	7	

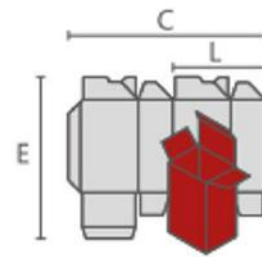
Machine speed depends on paper quality thickness.

Blanks Sizes:



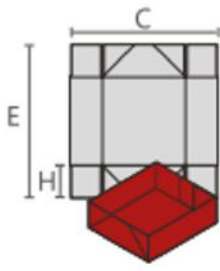
直线盒 / straight boxes

	MAX	MIN
C	1180	180
E	1000	80
L	580	100



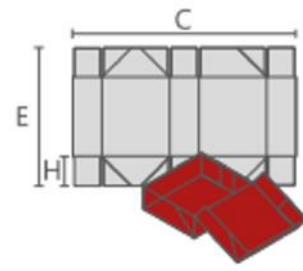
锁底盒 / Crash-lock bottom boxes

	MAX	MIN
C	1100	280
E	1000	80
L	540	130



四角盒 / 4-corner boxes

	MAX	MIN
C	1000	280
E	800	160
L	150	30



六角盒 / 6-corner boxes

	MAX	MIN
C	1000	280
E	800	200
L	150	30