



SHANGHAI EX. EXPORT INTERNATIONAL INDUSTRY CO., LTD

## TC-1080 Automatic Window Patching Machine



### Product description

Window Patching Machine is widely used for patching the window on the liquor box, gift box, tissue box, cosmetic box, toy box and so on.

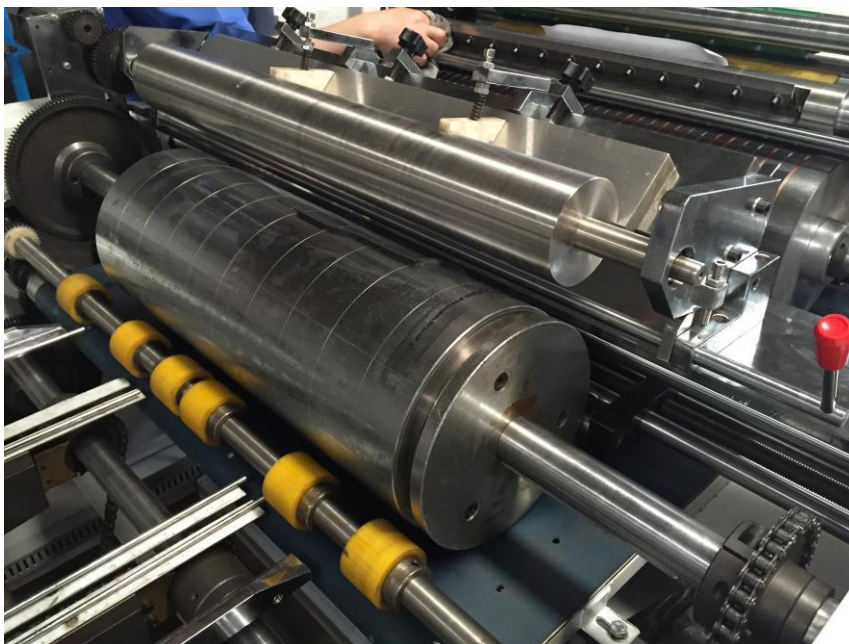




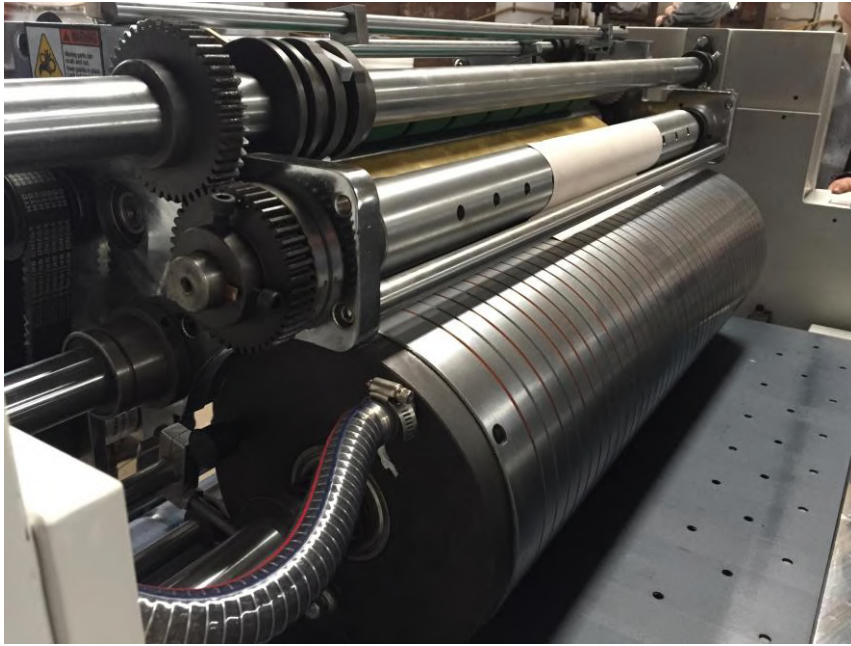
- 1) The paper feeder is controlled by servo motor, the belt is from Poland. No-stop feeding paper, no overlapping paper or missing paper.



- 2) The paper moving system adopt pushing chain and air sucking belt. They have positioning function, insure the paper comes same place in same time.



- 3) Glue part adopt flexo printing technology. We can adjust the place of glue on the paper without any stop. When missing paper, glue part will up in case of the glue leaves on the air sucking belt.



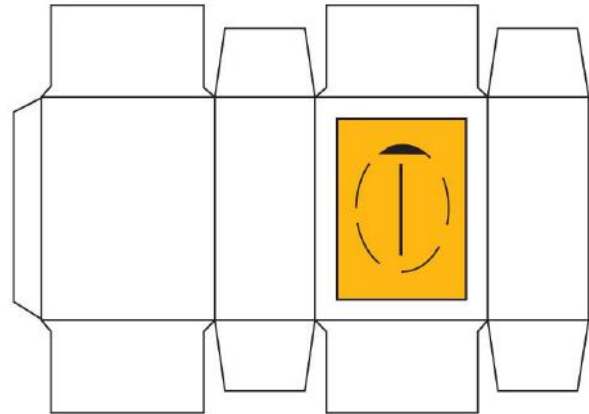
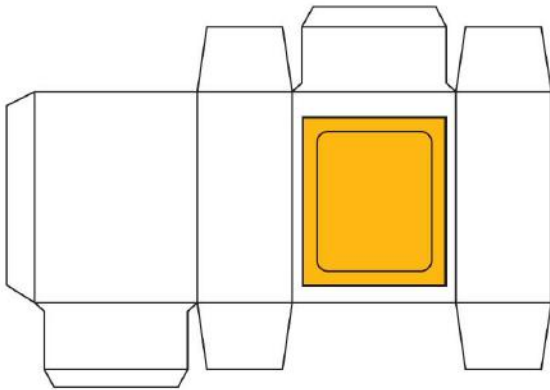
- 4) The film cutting part adopt roll-knife. It is controlled by servo motor so that we can adjust the film length without stop in the PLC. It also can adjust the place of film on the paper without stop. It has special knife to cut film for tissue box.

### Main Technical

Model	TC-1080
Paper Gsm	200-1000 gsm
Capacity	10000 pcs/hour
Size range of blank paper	Min.150x220mm Max.650x1080mm
Size range of window	Min.30x50mm Max.350x450mm
Film thickness	0.05mm - 0.25mm
Power	7 kw
Machine Weight	2500 kg
Machine Size	4500x 2000x1600mm



SHANGHAI EX. EXPORT INTERNATIONAL INDUSTRY CO., LTD



Sample show:

