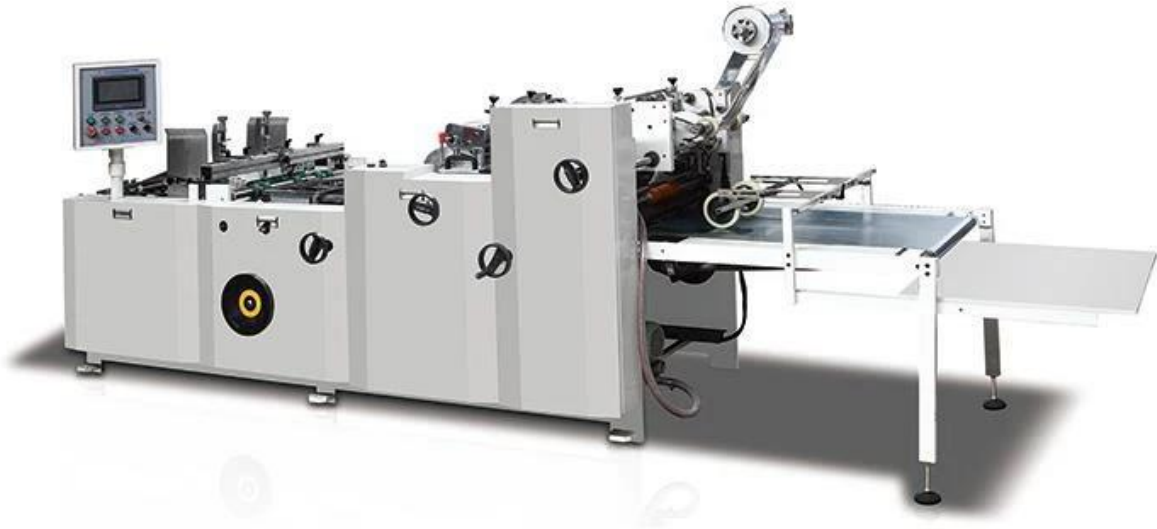




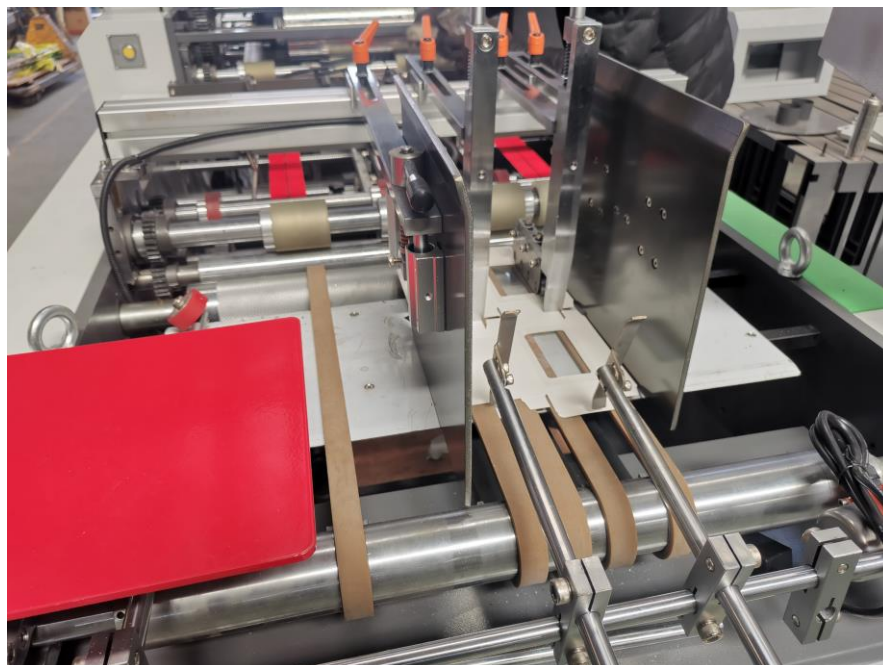
SHANGHAI EX. EXPORT INTERNATIONAL INDUSTRY CO., LTD

TC-650 Fully Automatic Paper Box Window Film Patching Machine



Product description

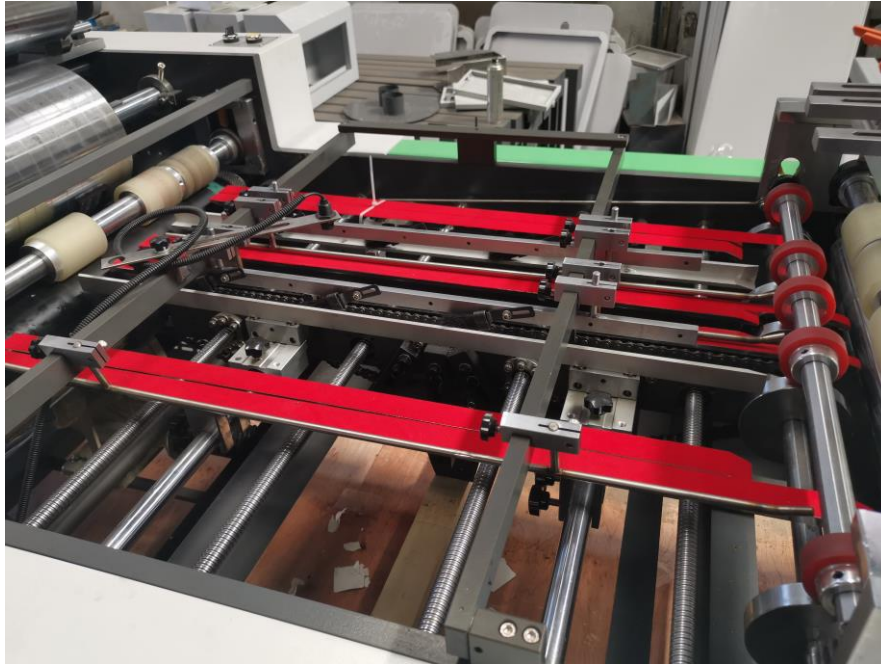
Window Patching Machine is widely used for patching the window on the liquor box, gift box, tissue box, cosmetic box, toy box and so on.





SHANGHAI EX. EXPORT INTERNATIONAL INDUSTRY CO., LTD

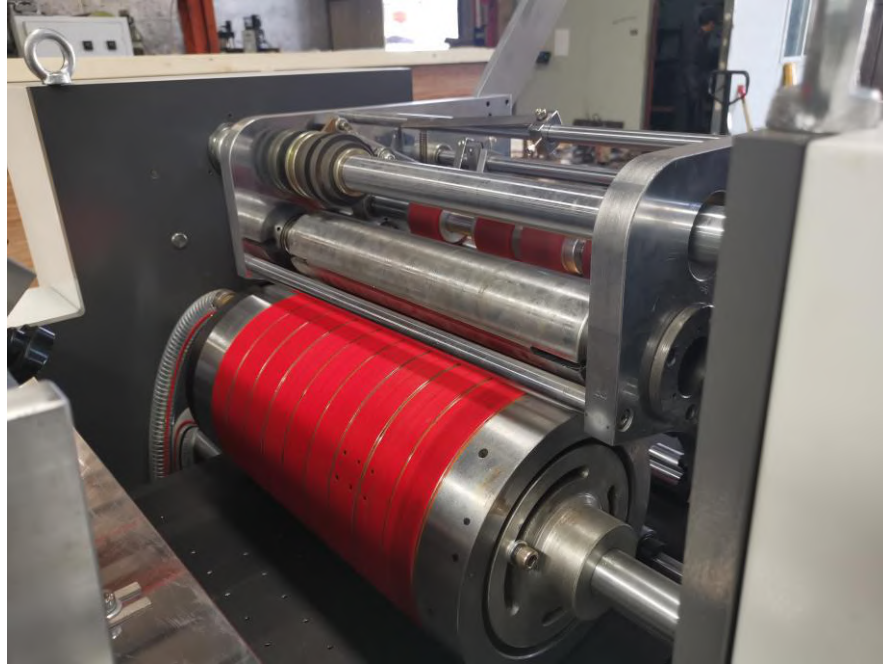
- 1) The paper feeder is controlled by servo motor, the belt is from Poland. No-stop feeding paper, no overlapping paper or missing paper.



- 2) The paper moving system adopt pushing chain and air sucking belt. They have positioning function, insure the paper comes same place in same time.



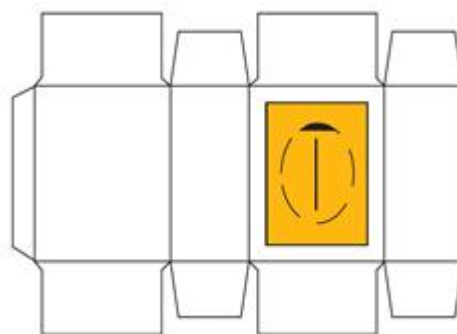
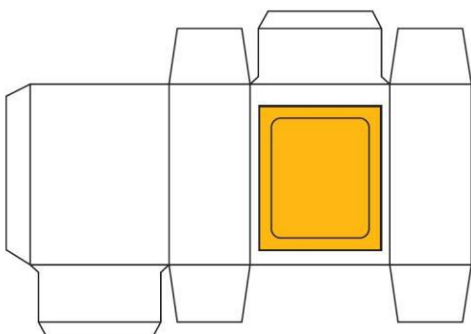
- 3) Glue part adopt flexo printing technology. We can adjust the place of glue on the paper without any stop. When missing paper, glue part will up in case of the glue leaves on the air sucking belt.



- 4) The film cutting part adopt roll-knife. It is controlled by servo motor so that we can adjust the film length without stop in the PLC. It also can adjust the place of film on the paper without stop. It has special knife to cut film for tissue box.

Main Technical

Model	TC-650
Paper weight	200 gram - 1000 gram
Capacity	16000 pieces/hour
Size range of paper	Min.150mm x 160mm Max.560mm x 650mm
Size range of window	Min.30mm x 50mm Max.300mm x 350mm
Film thickness	0.05-0.25mm
Total power	6.4 kw
Machine weight	2000kg
Machine size	4500x1200x1600mm





Sample show:

