

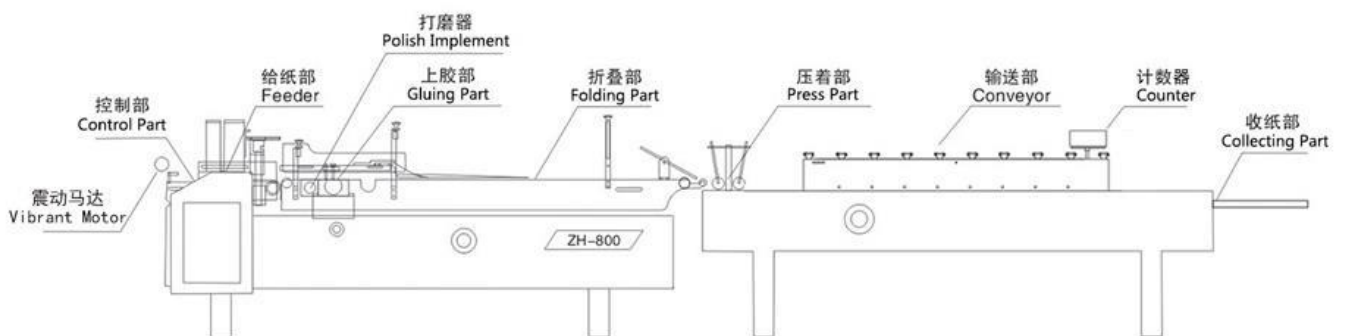


ZH-800 Automatic Folder Gluer With Straight Line



Model ZH-800C/800/900/1000 is the hot sale of the company. The users praise its stability, versatility and flexibility. It can paste many kinds of boxes. For small ones, it can make 40,000 to 50,000 pcs per hour. It's ideal equipment in printing industry.

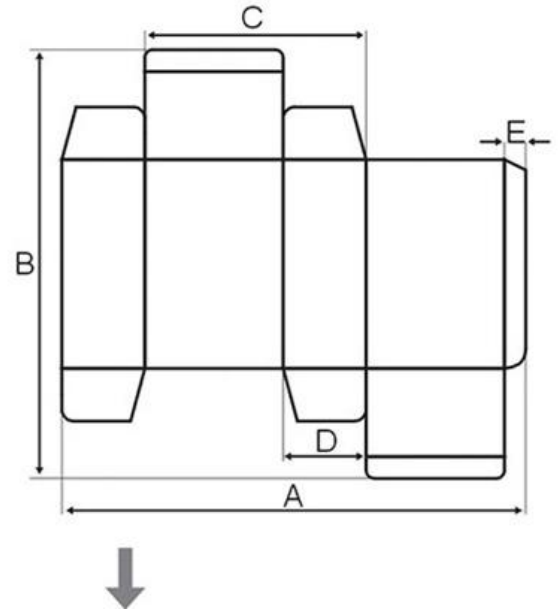
Plane Chart





SHANGHAI EX. EXPORT INTERNATIONAL INDUSTRY CO., LTD

- 1、 Line speed: 0~220m/min continuous adjustment.
- 2、 Usage paper: 200~800g/m² Paperboard.
3 ply E/F corrugated board
- 3、 The box forming: Either sides folds, the both sides prefold and either side glue.
- 4、 Paper feeding: Automatic feeding
- 5、 Binder: Dissolve the type.
- 6、 Electric: Single-phase AC220V 3KW
- 7、 Weight: 1800kg
- 8、 Dimension: 5800 × 900 × 1300(mm)
- 9、 The counting range: 0~999999(full-automatic)



技术参数 Technical Datum

单位: 毫米 (Unit: mm)

Model	A Max	A Min	B Max	B Min	C Max	C Min	Weight(T)	Outer Dimension
ZH-800	600	105	550	60	270	50	1.5	5800*900*1300
ZH-800C	450	65	550	60	220	30	1.5	5800*900*1300
ZH-900	700	105	550	80	330	50	2	6300*1050*1300
ZH-1000	800	130	600	80	380	60	2.3	6300*1200*1300