

## JD-4740AL four colors Offset printing machine



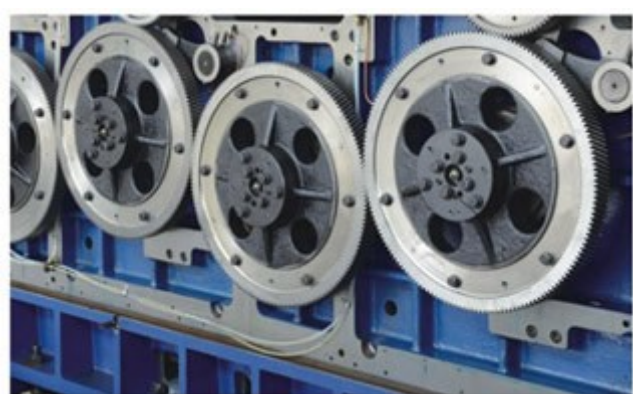
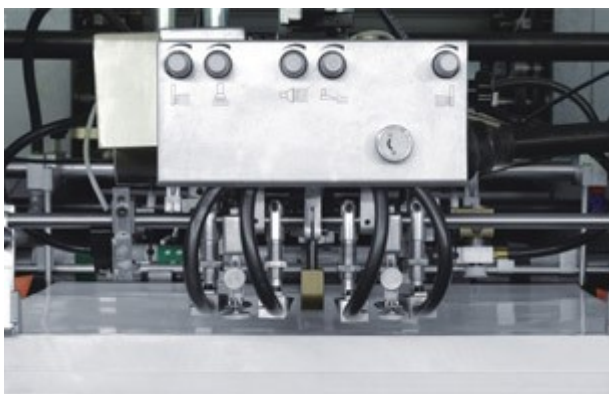
It is equipped with CC-LINK technological bus module from Mitsubishi.

Double-diameter impression cylinder and transfer drum can reduce the times of sheet take-over between print units.

The plate cylinder can be adjusted in the circumferential direction, lateral direction and diagonal direction.

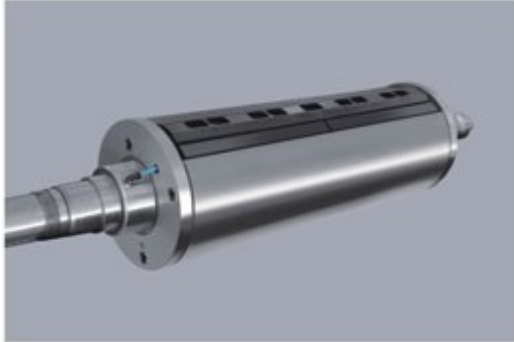
### Features:

1. The semi APC (Automatic Plate Changer) shortens the make-ready time.
2. To preset paper thickness when printing different kinds of paper. To adjust printing pressure in every unit automatically, quickly and synchronously.
3. With non-stop feeder, piles are changed at production speed. It saves a great deal of time when running thick paper and long version work offline.
4. It is equipped with CC-LINK technological bus module from Mitsubishi.
5. Double-diameter impression cylinder and transfer drum can reduce the times of sheet take-over between print units.
6. The plate cylinder can be adjusted in the circumferential direction, lateral direction and diagonal direction.
7. There are five rollers on the plate cylinder. There is an intermediate roller in alcoholic damping system, which can eliminate the „ghost" image, achieve the quick ink-water balance and reduce paper consumption.
8. There are 23 zones in split (staggered) ductor.



### Feeder:

- Conjugated cam. Forwarding mechanism controlled by linear guide rail makes machine speed faster and more stable.
- Rotary valve with patent can clean paper dust automatically and reduce the fault.



### Printing Units:

- Both of frame and base are integral casting.
- High frequency quenching of gears guarantee transmission accuracy.
- Helical gears, high overlap coefficient and low noise.



### Cylinders:

- The surface on the impression cylinders and plate cylinders are sprayed stainless steel so as to prolong press life better.
- Dynamic balance design can reduce vibration during printing.



### Console:

- The press memory or job memory card (disk) can save the current job. Changes and settings made to the current job are transferred to the press. While in printing mode, you can enter the presetting values for next job into the press memory or stored to a disk.
- CIP3/CIP4



### Ink Amount Control Console:

- Every ink key in every unit can be set by console.
- Ink amount can be displayed in digital and can be saved.

### Pneumatic Clamp Bar,

### Change Plate Without Tools:

- Tension of clamp bar is controlled by imported hoses and disc springs, so that it is more flexible for operation.
- Corners of cylinders are controlled by high precision encoder. Plates will be installed and dismantled by program automatically. Thus it can meet the long version and short version edition of the printing business needs.
- The tail of clamp bar is separated, so that it can help paper more smooth.



**Accurate Grippers:**

- After checked high strength steel pads had been quenched, their life will be longer and replacement will be more conveniently.
- Wear-resistant soft pads ensure stability of paper handover and precision of paper transmission.
- High precision needle roller bearings and opening bearings improve stability of gripper system.

**Automatic Device For Adjusting Vacuum Suction Feeder**

**Paper Thickness:**

- It is equipped with gear driven. Distance between cylinders can be given some feedbacks to screen by potentiometer automatically.
- Permanent magnetic generator driven can ensure stability of printing pressure, because of large torsion and strong self-lock.
- It is easier and more convenient to input paper thickness on the screen directly.

**Table:**

- Imported air pump with large volume
- It is suitable for all paper in any types or size automatically, so as to change paper format more quickly and more easily.
- Ultrasonic double-sheet detector can protect cylinders better.

**Technical Parameter:**

Specifications	JD4740-AL
Machine speed	12000s.p.h
Maximum sheet size	540×740mm
Minimum sheet size	273×393mm
Sheet thickness	0.06-0.6mm
Maximum image area	528×730mm
Plate size	677×755×0.3mm
Blanket size	740×760×1.9mm
Maximum feeder pile height	940mm
Maximum delivery pile height	780mm
Machine overall dimensions	7380×2550×1950mm
Total power of motors	23kw
Gross weight	19700kg

**Structure Diagram:**

